

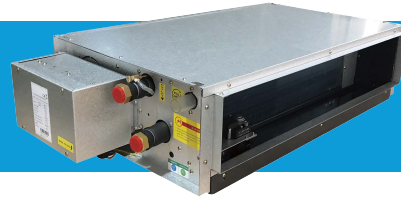


Date \_\_\_\_\_

Approval	Resubmit	File	Other	_____
Project	_____	Architect	_____	_____
Location	_____	Engineer	_____	_____
Rep	_____	GC	_____	_____
Rep PM	_____	Mech Contr	_____	_____
Unit(s) Tag(s)	_____			

# PDWSL-01

LOW/MEDIUM STATIC DUCTED SLIM FAN COIL



## Product Data

Configuration	Voltage (V/Ph/Hz)	Motor	Quantity of Fan Blowers	Filter Thickness (in)	Water Connections NPT		
					Cooling Coil (in)	Heating Coil (in)	Condensate (in)
2 pipe 3 row	115/1/60	EC	2	1/4	3/4	1/2	1
4 pipe 3+1 row	220/1/60						

## Capacity, Sound and Electrical




Configuration	Speed	Air	Cooling (BTU/Hr)		Heating	Sound (dB(A))		Electrical	
		Air Flow (CFM)	Cooling Capacity	Sensible Cooling Capacity	Heating Capacity (BTU/Hr)	Sound Pressure Level (Outlet / Inlet + Radiated)	Sound Power Level (Outlet / Inlet + Radiated)	Fan Motor Power (W)	Fan Motor Running Current @H speed (A) @ 115V / @ 220V
2 pipe 3 row	H	500	13400	9359	20832	46 / 49	55 / 58	50	0.43 / 0.86
	M	382	10982	7548	17072	37 / 40	46 / 49	23	
	L	147	5151	3522	8008	19 / 25	31 / 34	11	
4 pipe 3+1 row	H	500	13400	9359	11533	46 / 49	55 / 58	50	0.43 / 0.86
	M	382	10982	7548	9500	37 / 40	46 / 49	23	
	L	147	5151	3522	4733	19 / 25	31 / 34	11	

### Nominal Conditions

2-pipe	ESP:	0.05 in. wg.	Heating:	EAT = 70°F
	Cooling:	80°F DB/67°F WB		EWT = 140°F
4-pipe	Cooling:	80°F DB/67°F WB	Heating:	EAT = 70°F
		EWT/LWT = 45°F/55°F		EWT/LWT = 149°F/131°F



## Control and Valve Options

Control Options		Valves Options		
S Type (Full Control)		W Type (Flexi Control)	2 Way 24V	3 Way 24V
 IR Handset	 WWP V2 Wired Wall Pad	 TH-EC Thermostat	On-Off Modulating	On-Off Modulating

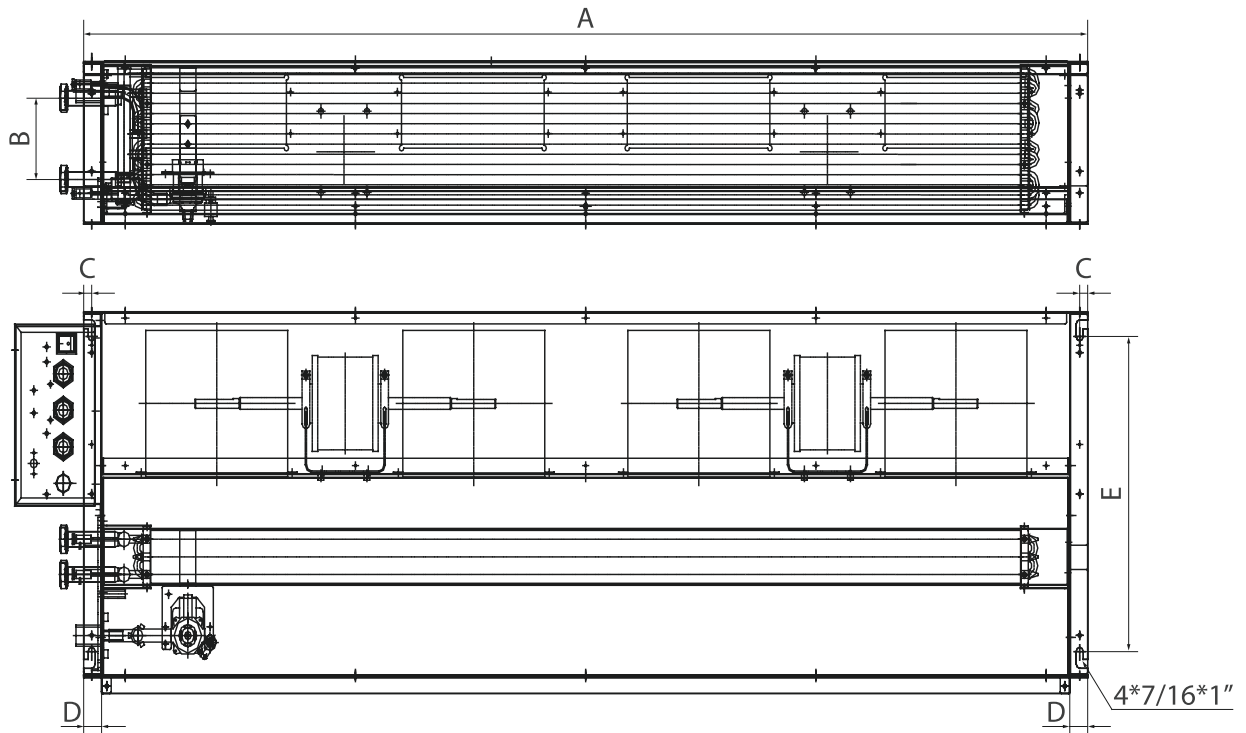
- **S Type (Full Control):** Total integrated controller to be controlled via IR handset and/or Wired Wall Pad.
- **W Type (Flexi Control):** 24 V control for wall thermostat or connection to BACnet BMS.

## Other Options

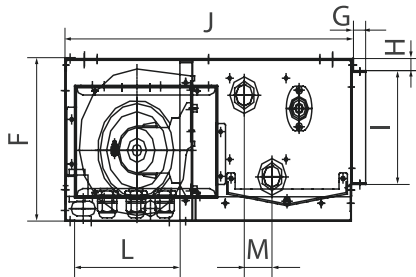
Electrical Heater Module		Filter	NBR Sound Attenuation Insulation	Condensate Pump
115V	220V			
0.5kW	1kW	Merv 8	0.20 in.	Preinstalled
1kW	2kW		0.40 in.	
1.5kW	3kW		0.60 in.	

## Dimensional Data 2-pipe & 4-pipe

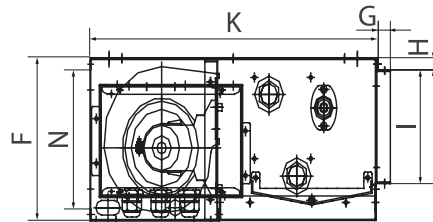
Net Weight: 44 lbs



Return air from bottom



Return air from rear



Unit Dimensions (in.)

A	B	C	D	E	F	G
31-1/2	4	1/2	1-1/8	15-1/4	7-7/8	13-16
H	I	J	K	L	M	N
5/8	5-1/2	18-1/8	18-1/8	6-1/2	1-1/16	6-11/16

\*Product dimensions are within  $\pm 1/16$  inches.

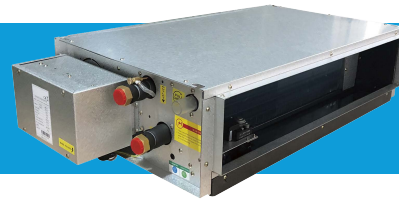


Date \_\_\_\_\_

Approval	Resubmit	File	Other	_____
Project	_____	Architect	_____	_____
Location	_____	Engineer	_____	_____
Rep	_____	GC	_____	_____
Rep PM	_____	Mech Contr	_____	_____
Unit(s) Tag(s)	_____			

# PDWSL-02

LOW/MEDIUM STATIC DUCTED SLIM FAN COIL



## Product Data

Configuration	Voltage (V/Ph/Hz)	Motor	Quantity of Fan Blowers	Filter Thickness (in)	Water Connections NPT		
					Cooling Coil (in)	Heating Coil (in)	Condensate (in)
2 pipe 3 row 4 pipe 3+1 row	115/1/60 220/1/60	EC	3	1/4	3/4	1/2	1




## Capacity, Sound and Electrical

Configuration	Speed	Air	Cooling (BTU/Hr)		Heating	Sound (dB(A))		Electrical	
		Air Flow (CFM)	Cooling Capacity	Sensible Cooling Capacity	Heating Capacity (BTU/Hr)	Sound Pressure Level (Outlet / Inlet + Radiated)	Sound Power Level (Outlet / Inlet + Radiated)	Fan Motor Power (W)	Fan Motor Running Current @H speed (A) @ 115V / @ 220V
2 pipe 3 row	H	800	22540	15528	35040	49 / 52	58 / 61	82	0.71 / 1.42
	M	559	17152	11608	26664	40 / 43	49 / 52	40	
	L	235	8665	5844	13470	25 / 28	34 / 37	15	
4 pipe 3+1 row	H	800	22540	15528	18600	49 / 52	58 / 61	82	0.71 / 1.42
	M	559	17152	11608	14367	40 / 43	49 / 52	40	
	L	235	8665	5844	7633	25 / 28	34 / 37	15	

### Nominal Conditions

2-pipe	ESP:	0.05 in. wg.	Heating:	EAT = 70°F
	Cooling:	80°F DB/67°F WB		EWT = 140°F
4-pipe	Cooling:	80°F DB/67°F WB	Heating:	EAT = 70°F
		EWT/LWT = 45°F/55°F		EWT/LWT = 149°F/131°F

## Control and Valve Options

Control Options		Valves Options		
S Type (Full Control)		W Type (Flexi Control)	2 Way 24V	3 Way 24V
 IR Handset	 WWP V2 Wired Wall Pad	 TH-EC Thermostat	On-Off Modulating	On-Off Modulating

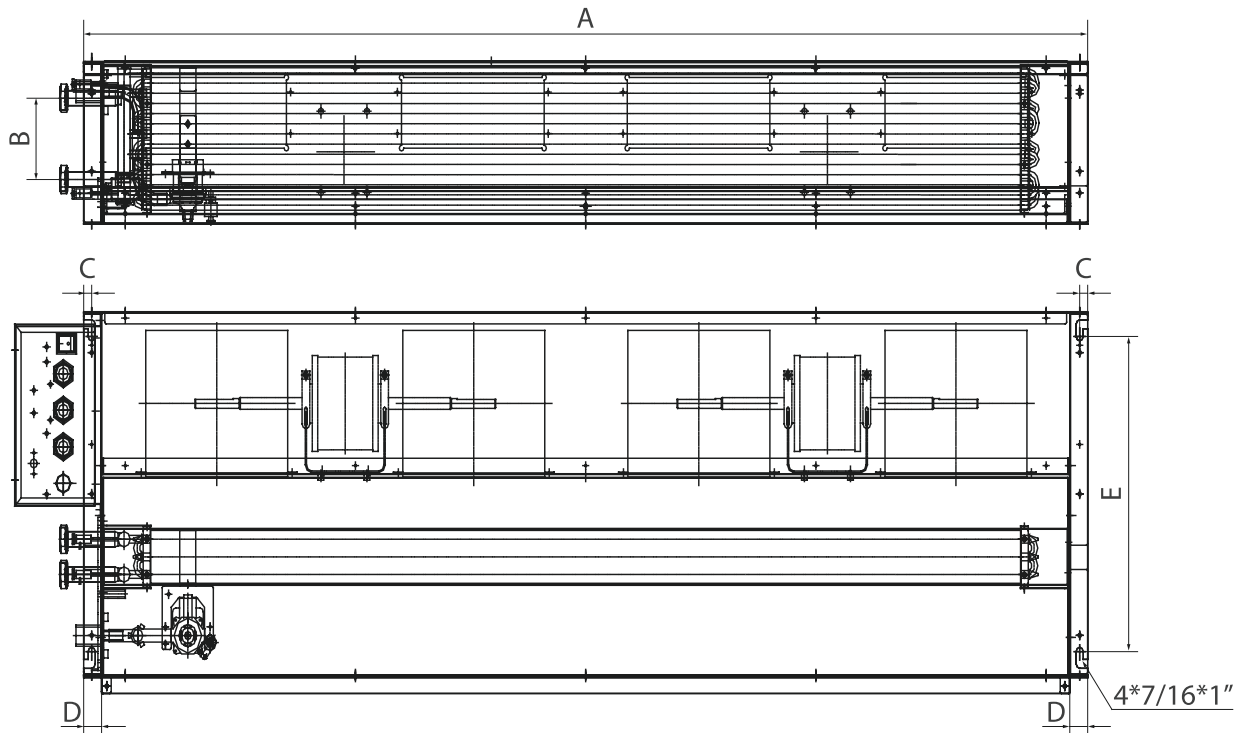
- **S Type (Full Control):** Total integrated controller to be controlled via IR handset and/or Wired Wall Pad.
- **W Type (Flexi Control):** 24 V control for wall thermostat or connection to BACnet BMS.

## Other Options

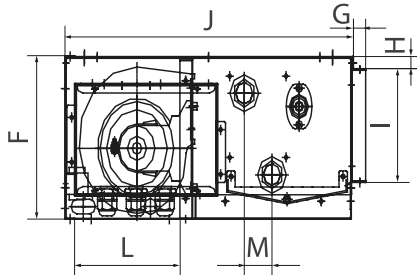
Electrical Heater Module		Filter	NBR Sound Attenuation Insulation	Condensate Pump
115V	220V			
0.5kW	1kW	Merv 8	0.20 in.	Preinstalled
1kW	2kW		0.40 in.	
1.5kW	3kW		0.60 in.	

## Dimensional Data 2-pipe & 4-pipe

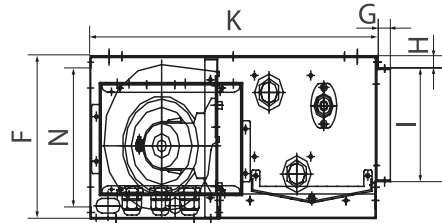
Net Weight: 62 lbs



Return air from bottom



Return air from rear



Unit Dimensions (in.)						
A	B	C	D	E	F	G
45-5/8	4	1/2	1-1/8	15-1/4	7-7/8	13-16
H	I	J	K	L	M	N
5/8	5-1/2	18-1/8	18-1/8	6-1/2	1-1/16	6-11/16

\*Product dimensions are within ± 1/16 inches.

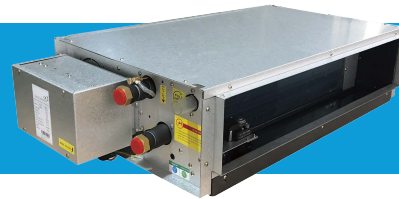


Date \_\_\_\_\_

Approval	Resubmit	File	Other	_____
Project	_____	Architect	_____	_____
Location	_____	Engineer	_____	_____
Rep	_____	GC	_____	_____
Rep PM	_____	Mech Contr	_____	_____
Unit(s) Tag(s)	_____			

# PDWSL-03

LOW/MEDIUM STATIC DUCTED SLIM FAN COIL



## Product Data

Configuration	Voltage (V/Ph/Hz)	Motor	Quantity of Fan Blowers	Filter Thickness (in)	Water Connections NPT		
					Cooling Coil (in)	Heating Coil (in)	Condensate (in)
2 pipe 3 row 4 pipe 3+1 row	115/1/60 220/1/60	EC	4	1/4	3/4	1/2	1

## Capacity, Sound and Electrical




Configuration	Speed	Air	Cooling (BTU/Hr)		Heating	Sound (dB(A))		Electrical	
		Air Flow (CFM)	Cooling Capacity	Sensible Cooling Capacity	Heating Capacity (BTU/Hr)	Sound Pressure Level (Outlet / Inlet + Radiated)	Sound Power Level (Outlet / Inlet + Radiated)	Fan Motor Power (W)	Fan Motor Running Current @H speed (A) @ 115V / @ 220V
2 pipe 3 row	H	1041	28862	20006	44867	50 / 53	59 / 62	100	0.87 / 1.74
	M	782	23411	15965	36394	41 / 44	50 / 53	43	
	L	335	12009	8090	18669	26 / 29	35 / 38	17	
4 pipe 3+1 row	H	1041	28862	20006	24733	50 / 53	59 / 62	100	0.87 / 1.74
	M	782	23411	15965	20133	41 / 44	50 / 53	43	
	L	335	12009	8090	10833	26 / 29	35 / 38	17	

### Nominal Conditions

2-pipe	ESP:	0.05 in. wg.	Heating:	EAT = 70°F
	Cooling:	80°F DB/67°F WB		EWT = 140°F
4-pipe	Cooling:	80°F DB/67°F WB	Heating:	EAT = 70°F
		EWT/LWT = 45°F/55°F		EWT/LWT = 149°F/131°F



## Control and Valve Options

Control Options		Valves Options		
S Type (Full Control)		W Type (Flexi Control)	2 Way 24V	3 Way 24V
 IR Handset	 WWP V2 Wired Wall Pad	 TH-EC Thermostat	On-Off Modulating	On-Off Modulating

- **S Type (Full Control):** Total integrated controller to be controlled via IR handset and/or Wired Wall Pad.
- **W Type (Flexi Control):** 24 V control for wall thermostat or connection to BACnet BMS.

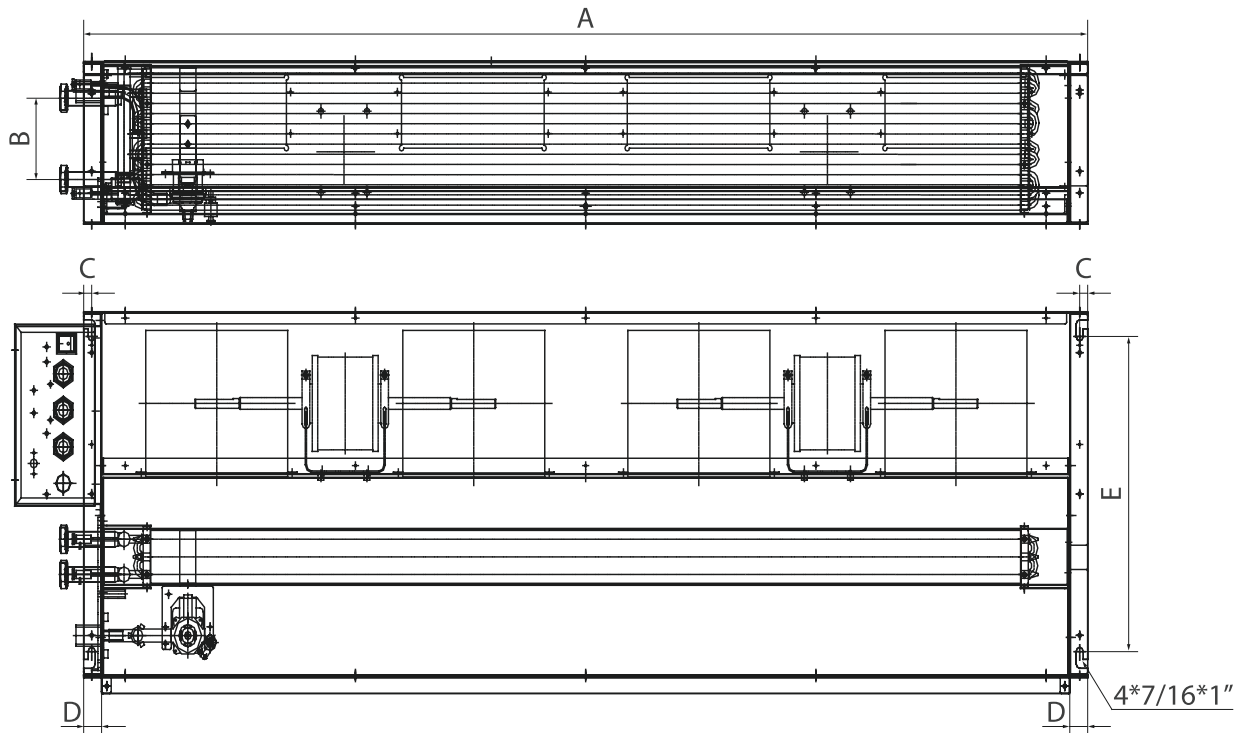
## Other Options

Electrical Heater Module		Filter	NBR Sound Attenuation Insulation	Condensate Pump
115V	220V			
0.5kW	1kW	Merv 8	0.20 in.	Preinstalled
1kW	2kW		0.40 in.	
1.5kW	3kW		0.60 in.	

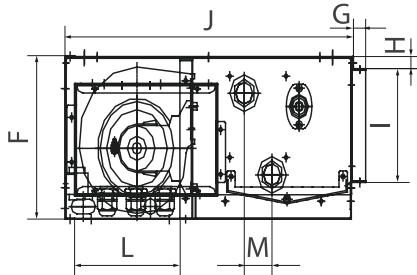


## Dimensional Data 2-pipe & 4-pipe

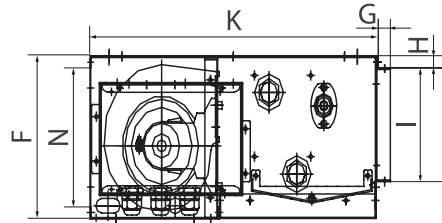
Net Weight: 77 lbs



Return air from bottom



Return air from rear



Unit Dimensions (in.)						
A	B	C	D	E	F	G
61-13/16	4	1/2	1-1/8	15-1/4	7-7/8	13-16
H	I	J	K	L	M	N
5/8	5-1/2	18-1/8	18-1/8	6-1/2	1-1/16	6-11/16

\*Product dimensions are within ± 1/16 inches.